

## SYSTEMATIC REVIEW

## The effectiveness of hip interventions in patients with low-back pain: A systematic review and meta-analysis



Luis Ceballos-Laita<sup>a,\*</sup>, Elena Estébanez-de-Miguel<sup>b</sup>, Jose Jesús Jiménez-Rejano<sup>c</sup>,  
Elena Bueno-Gracia<sup>b</sup>, Sandra Jiménez-del-Barrio<sup>a</sup>

<sup>a</sup> Clinical Research Group in Health Sciences of Surgery. Department of Surgery, Ophthalmology, Otorhinolaryngology and Physical Therapy, Faculty of Health Sciences, University of Valladolid, Soria, Spain

<sup>b</sup> Department of Physiatry and Nursery, Faculty of Health Sciences, University of Zaragoza, Zaragoza, Spain

<sup>c</sup> Department of Physical Therapy, University of Sevilla, Sevilla. Spain

Received 22 March 2022; received in revised form 8 March 2023; accepted 27 March 2023

Available online 5 April 2023

### KEYWORDS

Disability evaluation;  
Hip joint;  
Low back pain;  
Meta-analysis;  
Systematic review

### Abstract

**Background:** Low-back pain (LBP) may be directly or indirectly related to impairments from the hip joint.

**Objective:** To evaluate the effectiveness of hip interventions on pain and disability in patients with LBP in the short-, medium-, and long-term.

**Methods:** PubMed, Cochrane Library, PEDro, Web of Science, and SCOPUS databases were searched in November 2022. Randomized controlled trials involving hip-targeted interventions compared to specific low back interventions in patients with LBP were selected. The outcomes were pain intensity and disability. The quality of the studies was assessed with the risk of bias tool. GRADE was used to rate the certainty of evidence. Meta-analyses were conducted using random effects models.

**Results:** A total of 2581 studies were screened. Eight were included in the meta-analysis involving 508 patients with LBP. The results provided very low certainty that both hip strengthening and hip stretching improved pain (MD = -0.66; 95% CI -0.86, -0.48; I<sup>2</sup>:0%) (MD = -0.55; 95% CI -1.02, -0.08) and disability (SMD = -0.81; 95% CI -1.53, -0.10; I<sup>2</sup>: 80%) (SMD = -1.03; 95% CI -1.82, -0.25) in the short-term, respectively. No benefits were found in the medium- or long-term. The risk of bias, heterogeneity, and imprecision of the results downgraded the level of evidence.

**Conclusions:** Very low certainty evidence suggest a positive effect of hip strengthening in isolation or combined with specific low back exercise and hip stretching combined with specific low back exercise for decreasing pain intensity and disability in the short-term, in patients with LBP.

**Systematic review registration number:** PROSPERO CRD42022303173

© 2023 Associação Brasileira de Pesquisa e Pós-Graduação em Fisioterapia. Published by Elsevier España, S.L.U. All rights reserved.

\* Corresponding author at: Calle Universidad S/N, 42002, Campus Duques de Soria, Soria, Spain.

E-mail: [Luis.ceballos@uva.es](mailto:Luis.ceballos@uva.es) (L. Ceballos-Laita).

Social media:  MU\_OMPT\_UIC (L. Ceballos-Laita)

## Introduction

Low Back Pain (LBP) is one of the major causes of pain and disability in adults and a common reason for seeking medical care.<sup>1,2</sup> LBP is experienced by 80% of the population at least once during their lifetime.<sup>3,4</sup> The prevalence of LBP is gradually increasing and is higher among females in all age groups.<sup>5</sup> LBP can be classified based on symptoms duration in acute, sub-acute, or chronic LBP,<sup>6</sup> or according to diagnosis, in which approximately 90% of patients with LBP are categorized as non-specific LBP, meaning that the etiology is not known.<sup>2</sup>

The lumbar spine is interconnected to the pelvis and hips, so LBP may be directly or indirectly related to impairments from adjacent structures. Some studies found that an excessive amount of anterior pelvic tilt is used to compensate a lack of hip extension, and that limited hip extension also alters the motor activation of the lumbar spine.<sup>7–10</sup> In addition, several authors, concluded that patients with LBP often present hip pain and morning stiffness,<sup>11</sup> a reduction of both passive and active hip rotation range of motion,<sup>12–17</sup> and/or hip extensor muscle weakness.<sup>18</sup>

Exercise therapy is the most recommended intervention for LBP. But, there is no clear evidence on which type of exercise is more effective,<sup>19</sup> and the effects are small to moderate. Based on the interconnection of the lumbopelvic structures with the hip, interventions targeting the hip or the addition of hip-targeted interventions to specific low back interventions may provide better benefits for patients with LBP. Two systematic reviews and meta-analysis addressed this topic and reported conflicting results about the effectiveness of adding hip interventions to specific low back treatments.<sup>20,21</sup> Since the publication of these reviews, new randomized controlled trials (RCTs) have been published in this field.

Therefore, the aim of this systematic review with meta-analysis was to investigate the effectiveness of hip-targeted interventions, in isolation or in combination with LBP interventions, compared to specific low back interventions to improve pain and disability in patients with LBP.

## Methods

### Study design

The protocol of this systematic review was registered in the International Prospective Register of Systematic Reviews (PROSPERO) with the registration number CRD42022303173. This systematic review followed the Preferred Reporting Items for Systematic Reviews and Meta-analysis (PRISMA) statement and Cochrane recommendations.<sup>22</sup>

### Search strategy

The bibliographical search was conducted in PubMed (MEDLINE), Physiotherapy Evidence Database (PEDro), Scopus; Cochrane Library, and Web of Science (WOS) from inception to 20 November 2022. The Population, Intervention, Comparison, Outcome, and Study design (PICOS) framework was used to define the search strategy. Medical Subjects Headings (MeSH) were used as the keywords in the search

strategy: back pain, low back pain, sciatica, low back ache, mechanical low back pain, hip, hip joint, pain measurement, disability evaluation, and clinical trial. The strategies used for each database are shown in Supplementary material – Table S.1. Scopus database was included as a tool for searching gray literature, and a hand search of the reference list of the included studies was performed. Searches were limited to studies in English, French, and Spanish.

### Eligibility criteria and study selection

The included studies met the PICOS criteria: 1) Population: adults diagnosed with LBP; 2) Intervention: hip-targeted conservative interventions applied in isolation or combined with specific low back interventions; 3) Comparison: specific low back interventions in isolation defined as the use of any physical intervention (manual therapy, massage therapy, exercise therapy, thermotherapy, electrotherapy, or other therapy) that targeted the low back specifically and not the hip joint; 4) Outcomes consisted of pain intensity and disability; 5) Study design: RCTs.

Studies were excluded if they: 1) were trials conducted with animals, cadavers, or simulators; 2) included participants with traumatic injuries or after surgical interventions; 3) the intervention was applied to the whole body; 4) the outcome variables reported were not the outcomes of interest or were not measured using a valid and reliable instrument.

After results of searches were retrieved, references were exported to Mendeley desktop, and duplicates were removed. Two reviewers independently (LC and SJ) assessed the title and abstract of each reference to determine potential eligibility. The same independent reviewers assessed potential full texts. A third author (EE) resolved the discrepancies between the two reviewers. Three authors of original papers were contacted by e-mail to clarify eligibility criteria. The inter-rater agreement was calculated using the Cohen's kappa coefficient.<sup>23</sup>

### Data extraction

The two authors independently extracted the data from the identified studies using the standardized process adapted from the Cochrane Collaboration. Extracted information included: 1) characteristics of the study population; 2) aspects of the intervention performed; 3) outcome measures; 4) results; and 5) follow-up period. The third assessor resolved any disagreements. Data were analyzed using a qualitative synthesis and, whenever possible, using a quantitative synthesis (meta-analysis).

### Risk of bias and certainty of the evidence

Two assessors assessed the quality of the studies using the Cochrane Risk of Bias tool. The Cochrane Risk of Bias tool determines the potential bias and the internal validity of the studies and classifies them as “low”, “unclear”, or “high” risk based on 7 criteria.<sup>24</sup> This tool has shown to be reliable for evaluating the quality of studies and assessing risk of bias. Funnel plot asymmetry to assess publication bias in the meta-analyses was not conducted in this study

because the meta-analyses presented did not meet the rule of at least 10 trials.

The GRADEpro GDT was used to develop a summary of the findings. This classification categorizes the evidence as “high”, “moderate”, “low”, or “very low” and allows researchers and clinicians to discern the importance of the results. The certainty of evidence for the meta-analysis was downgraded according to the presence of the following: risk of bias (downgraded by one level or two levels if more than 25% or 50% of the participants were from studies with poor or fair methodological quality: lack of allocation concealment, random allocation and/or sample size calculation, participant, and personnel blinding, blinding of outcome assessors), inconsistency of results (downgraded by one level if there was significant heterogeneity regarding outcome measurement or intervention, or if the  $I^2$  value was  $\geq 50\%$ , and two levels if the  $I^2$  was  $\geq 75\%$ ),<sup>25,26</sup> indirectness of evidence (downgraded by one level if different populations, interventions, or comparators were included), and imprecision (downgraded by one level if fewer than 100 participants were included in the comparison, and two levels when the sample sizes were  $\leq 30$  individuals).<sup>26–28</sup> Single randomized trials were considered inconsistent and imprecise and provided “low certainty” evidence. This could be further downgraded to “very low” certainty evidence if there was also a high risk of bias.<sup>24,29</sup>

## Data synthesis and analysis

The quantitative synthesis of the results was conducted according to the outcomes considered: pain intensity and disability. When studies used different tools to assess the same outcome, the authors performed inverse variance methods.

Separate analyses were performed for pain intensity and disability. When studies reported pain data on a scale other than 0 to 10 (e.g., 0 to 100) we transformed the data into a 0 to 10 scale.<sup>30</sup> Time points of assessment considered were short-term (or post intervention), medium-term (6 months), and long-term (12 months). Mean, standard deviation (SD), and sample size at each time point were extracted for each group. Outcomes were analyzed based on the post-intervention means and SDs by calculating the mean difference (MD) when studies used the same scale or standardized mean difference (SMD) when studies used different scales, with 95% CIs. Significance was set at a  $P$  value  $< 0.05$ . The minimum clinically important change (MCID) on pain intensity was stated as 1.5.<sup>31</sup> For disability, the between-group effects size was used to classify the effect estimates as small (SMD at least 0.2 but less than 0.5), medium (SMD from 0.5 to less than 0.8), or large (SMD 0.8 or greater).<sup>32</sup>

Data were combined for meta-analysis using a minimum of two trials assessed as clinically homogeneous. Trials were considered clinically homogeneous if there was a common intervention and outcome. When a three-arm study was included, the data from the control group were divided.<sup>33</sup> Random-effect meta-analysis was performed when the combination of intervention effects could incorporate an assumption that the studies are not all estimating the same intervention effect.<sup>34</sup>

A researcher analysed data using RevMan 5.4 software.

## Results

### Literature search and screening

Eight studies were included in the qualitative and quantitative synthesis. One study was excluded due to lack of information about the comparison group.<sup>35</sup> The description of the selection process is shown in the PRISMA flowchart diagram (Fig. 1). The agreement between reviewers was calculated by kappa with a value of 0.9.

### Characteristics of included studies

A total of 8 RCTs were included comprising 508 patients with LBP. The sample size ranged from 24 to 80 patients.

Most studies included patients with LBP for at least 6 weeks,<sup>36</sup> or 3 months.<sup>37–40</sup> All the studies included patients with LBP older than 18.<sup>36–43</sup> Concerning the LBP diagnosis, 3 studies included patients with non-specific LBP,<sup>36,38,39</sup> one study included patients with mechanical LBP,<sup>41</sup> and 3 studies did not specify the LBP diagnosis.<sup>40,42,43</sup> The sociodemographic and clinical characteristics of the participants in each study are shown in Table 1.

The hip-targeted intervention group (hip-targeted intervention) in each trial consisted of different hip interventions. Seven studies added hip-targeted interventions to specific low back interventions,<sup>36–39,41–43</sup> and only one applied hip treatment in isolation.<sup>40</sup> Four studies combined hip strengthening with specific low back exercise,<sup>36–38,42</sup> one applied hip abductor strengthening in isolation,<sup>40</sup> one study combined hip joint stretching with specific low back exercise,<sup>38</sup> and 3 studies applied hip joint mobilization and strengthening plus specific low back intervention.<sup>39,41,43</sup>

Specific low back intervention groups (control) were mainly based on lumbar stabilization exercises in all 8 studies.<sup>36–43</sup> Table 1 shows the treatments applied in the hip and low-back groups.

Information on the duration of the sessions, the number of sessions per week, and the total number of sessions are presented in the Supplementary material - Table S.2. The sessions duration ranged from 20 to 60 min,<sup>37–39,42,43</sup> the most common frequency was 2–3 sessions per week,<sup>37–40,42,43</sup> and most of the studies performed a total number of sessions between 18 and 24.<sup>37,38,40,42</sup> Three studies did not report the frequency, duration, and/or the total number of sessions.<sup>36,41,43</sup>

### Outcome measures

The outcomes considered in this meta-analysis were pain intensity and disability. Seven studies assessed pain intensity. Five studies used the visual analogue scale (VAS),<sup>36–40</sup> and 2 used the numeric pain rating score (NPRS).<sup>41,43</sup> Disability was measured for all the studies. Six studies used the Oswestry Disability Index (ODI),<sup>36–38,41–43</sup> and 2 used the Roland Morris Questionnaire.<sup>39,40</sup>

All the studies assessed the outcome variables at baseline and after the intervention (short-term).<sup>36–43</sup> Two studies assessed the medium- and long-term results at 6 months and at 12 months of follow-up, respectively.<sup>39,43</sup>

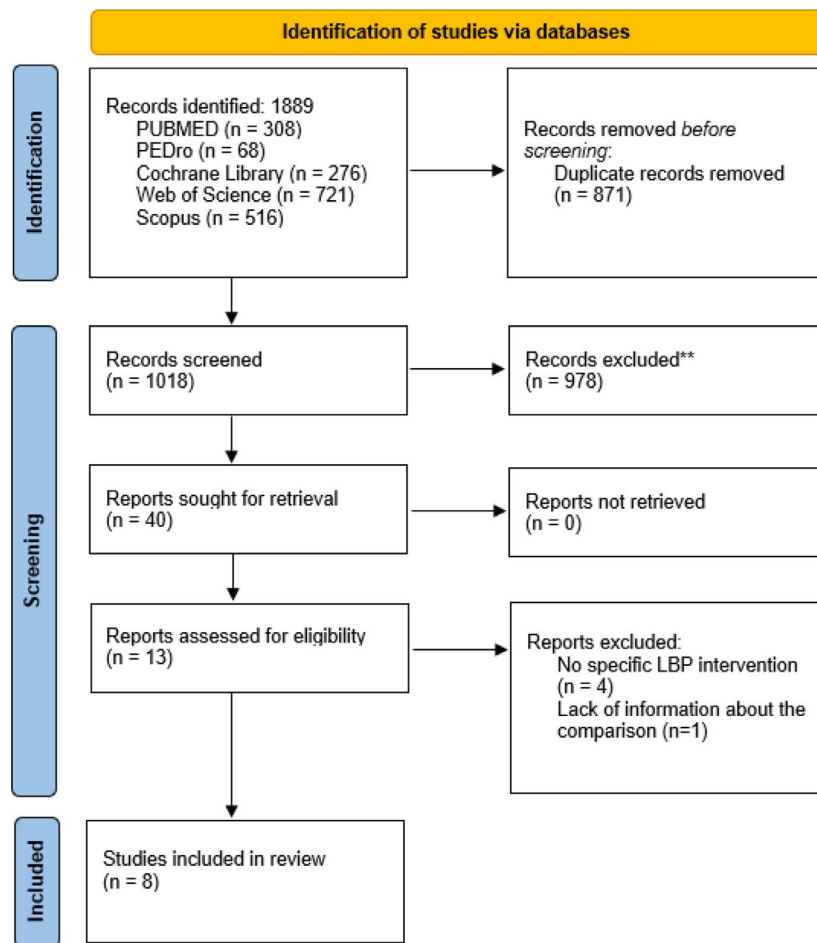


Fig. 1 PRISMA flowchart.

### Study quality and risk of bias

All RCTs included in this review showed a high risk of selection bias and reporting. Most of the studies correctly performed the random sequence generation, but the concealment allocation was only performed in 3. No study blinded the participants or therapist (this item is expected in conservative non-pharmacological interventions). The Cochrane risk-of-bias tool results are shown in Fig. 2.

### Synthesis of results

#### Pain intensity

Pain intensity was measured in 7 studies after the intervention,<sup>36–41,43</sup> and in 2 studies at 6 and 12 months of follow-up.<sup>39,43</sup>

#### Hip strengthening + specific low back exercise versus specific low back

Very low certainty evidence showed that hip strengthening plus specific low back exercise provide statistically significant but clinically unimportant improvement in pain intensity compared to specific low back intervention

(MD = −0.66; 95% CI −0.86, −0.48;  $I^2$ : 0%; 3 studies, 153 participants) (Fig. 3A).

#### Hip joint stretching + specific low back exercise versus specific low back

Very low certainty evidence showed that hip joint stretching plus specific low back exercise provide statistically significant but clinically unimportant improvement in pain intensity compared to specific low back intervention (MD = −0.55; 95% CI −1.02, −0.08; 1 study, 32 participants) (Fig. 3A).

#### Hip abductor strengthening versus specific low back intervention

Very low certainty evidence showed that hip abductor strengthening provide statistically significant but clinically unimportant improvement in pain intensity compared to specific low back intervention (MD = −0.93; 95% CI −1.67, −0.19; 1 study, 24 participants) (Fig. 3A).

#### Hip joint mobilization and hip strengthening + specific low back intervention versus specific low back intervention

Very low certainty evidence showed that hip joint mobilization and hip strengthening plus specific low back

**Table 1** Sociodemographic and clinical characteristics of the participants.

Autor (year)	N (sex ratio)	Participants		Intervention		Outcome (tool)	Follow-up
		Mean age (SD)	Diagnosis	Low-back group	Hip group		
Hip strengthening + specific low back exercise versus specific low back intervention Lee and Kim 2015	68	CG: 50.0 (11.4); 59.38 (17.3) EG: 54.9 (10.6); 61.0 (13.2)	CLBP	Lumbar stabilization exercises (n = 37)	Lumbar stabilization exercises + hip strengthening (n = 31)	-Pain (VAS) -Disability (ODI)	
Kendall et al. 2015	80 (38 M/42 F)	CG: 33 (33.4) EG: 41 (37.4)	NSLBP	Lumbopelvic exercises (n = 40)	Lumbopelvic exercises + hip strengthening (n = 40)	- Pain (VAS) - Disability (ODI)	
Jeong et al. 2015	40 (0 M/40 F)	CG: 41.2 (6.7) EG: 41.2 (5.5)	CLBP	Lumbar stabilization exercises (n = 20)	Lumbar stabilization exercises + gluteus muscles strengthening (n = 20)	-Disability (ODI)	
Kim and Yim 2020	66 (34 M/32 F)	CG: 47.7 (8.5) EG: 47.0 (9.4)	NSLBP	Lumbar stabilization exercises (n = 10)	Lumbar stabilization exercises + hip strengthening (n = 22)	-Pain (VAS) -Disability (ODI)	
Hip joint stretching + specific low back exercise versus specific low back intervention Kim and Yim B 2020	66 (34 M/32 F)	CG: 47.7 (8.5) EG: 47.5 (9.7)	NSLBP	Lumbar stabilization exercises (n = 10)	Lumbar stabilization exercises + hip stretching (n = 24)	-Pain (VAS) -Disability (ODI)	
Hip (abductor) strengthening versus specific low back intervention Aboufazel et al. 2021	24 (0 M/24 F)	CG: 39.0 (5.9) EG: 38.8 (5.8)	CLBP	Lumbar stabilization exercises (n = 12)	Hip abductor strengthening (n = 12)	-Pain (VAS) -Disability (RMQ)	
Hip joint mobilization & hip strengthening + specific low back intervention versus specific low back intervention Bade et al. 2017	84 (50 M/34 F)	CG: 48.1 (2.4) EG: 44.8 (2.3)	MLBP	Guideline-oriented low back treatment (n = 39)	Guideline-oriented low back treatment + hip strengthening and hip mobilizations (n = 45)	-Pain (NPRS) -Disability (ODI)	
Fukuda et al. 2021	70 (33 M/37 F)	CG:35.2 (12.5) EG:40.2 (12.4)	CNSLBP	Lumbar stabilization exercises + manual therapy (n = 35)	Lumbar stabilization exercises + manual therapy + hip strengthening (n = 35)	-Pain (VAS) -Disability (RMQ)	Medium-term (6 months) Long-term (12 months)
Burns et al. 2021	76 (29 M/47 F)	CG:40.2 (19.9) EG:39.0 (18.0)	LBP	Guideline-oriented low back treatment (n = 39)	Guideline-oriented low back treatment + tailored hip treatment (manual therapy and strengthening) (n = 37)	-Pain (NPRS) -Disability (ODI)	Medium-term (6 months) Long-term (12 months)

CG, control group; CLBP, chronic low back pain; CNSLBP, chronic non-specific low back pain; EG, experimental group; LBP, low back pain; MLBP, mechanical low back pain; NPRS, numeric pain rating score; NSLBP, non-specific low back pain; ODI, Oswestry Disability Index; RMQ, Roland Morris Questionnaire; SD, standard deviation; VAS, visual analogue scale.

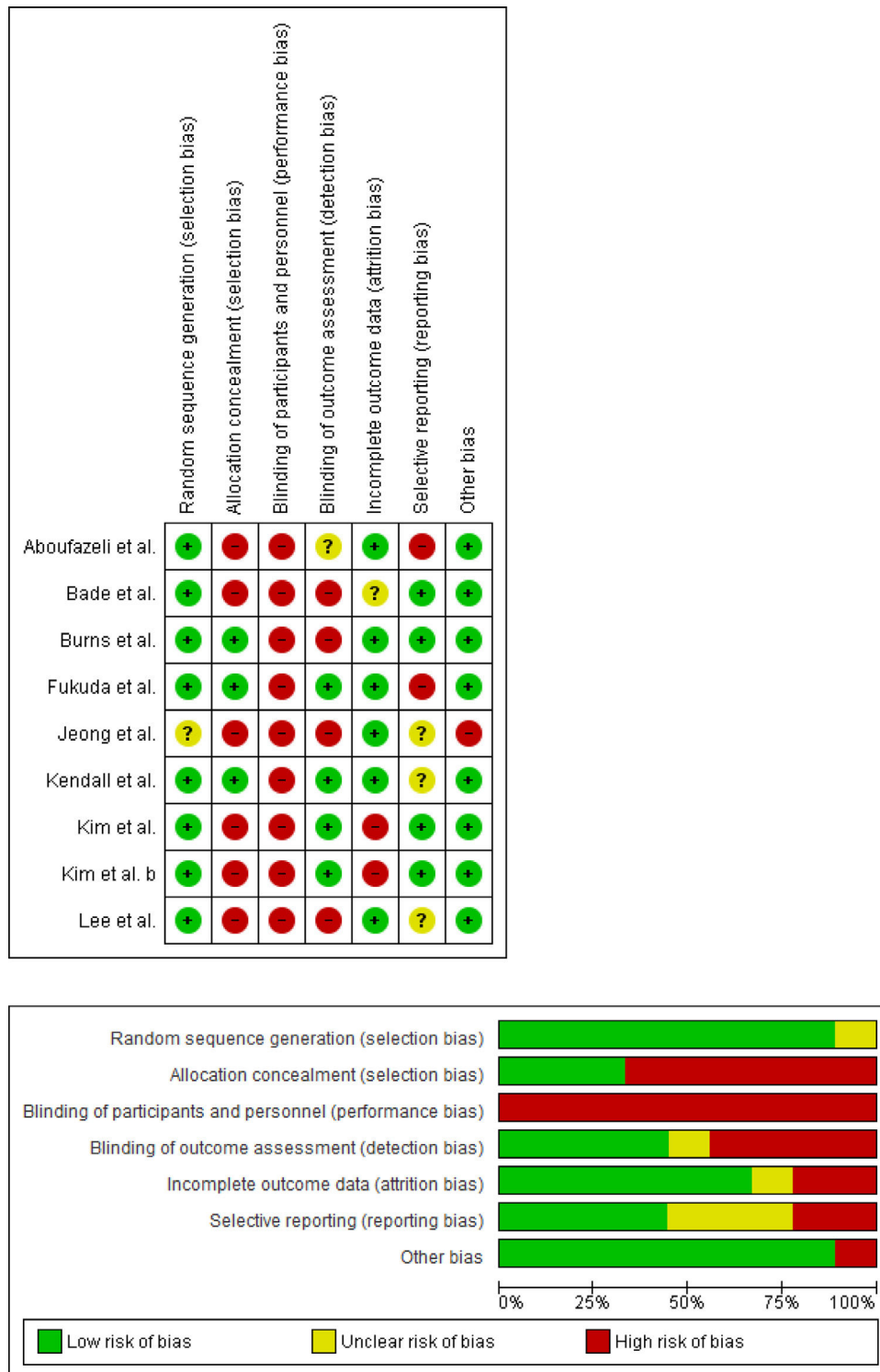


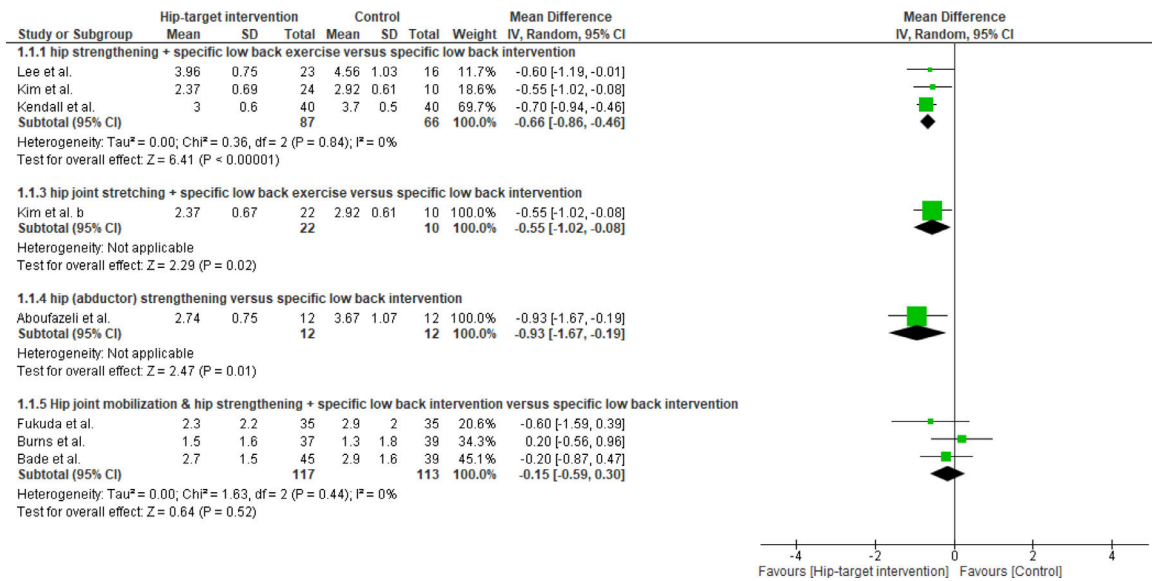
Fig. 2 Risk of bias Cochrane tool.

intervention provide no better improvement in pain intensity compared to specific low back intervention (MD = -0.15; 95% CI -0.59, 0.30;  $I^2$ : 0%; 3 studies, 230 participants) (Fig. 3A).

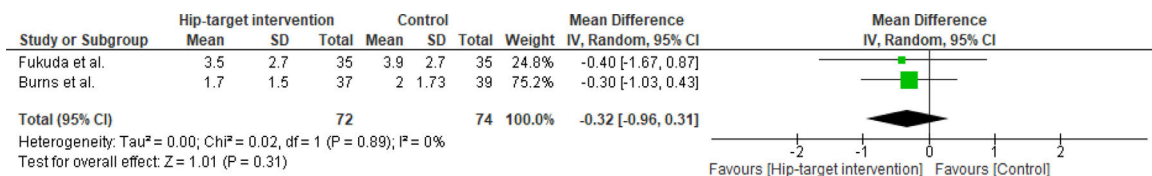
These studies measured pain intensity in the medium-term and long-term.<sup>39,43</sup> Very low certainty evidence showed that hip joint mobilization and hip strengthening

plus specific low back intervention provide no better improvement in pain intensity compared to specific low back intervention at medium-term (MD: -0.32; 95% CI: -0.96, 0.31;  $I^2$ : 0%; 2 studies; 146 participants) (Fig. 3B), or long-term (MD: -0.10; 95% CI: -0.65, 0.45;  $I^2$ : 0%; 2 studies; 146 participants) (Fig. 3C).

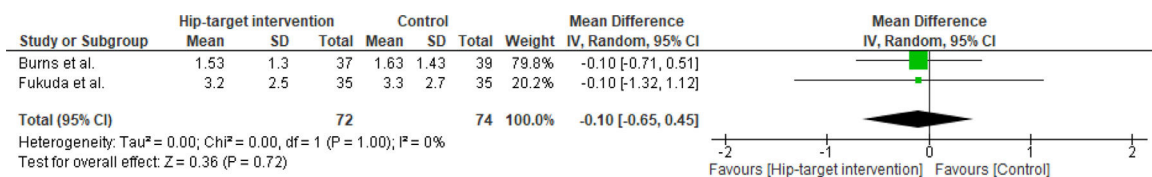




**Fig. 3A** Forest plot of pain intensity for hip-targeted interventions in isolation or in combination with LBP interventions versus specific low back treatment in the short-term.



**Fig. 3B** Forest plot of pain intensity for hip-targeted interventions combined with LBP interventions versus specific low back treatment in the medium-term.



**Fig. 3C** Forest plot of pain intensity for hip-targeted interventions combined with LBP interventions versus specific low back treatment in the long-term.

## Disability

Disability was measured in all the studies after the intervention,<sup>36–43</sup> and in 2 studies at 6 and 12 months of follow-up.<sup>39,43</sup>

## Hip strengthening + specific low back exercise versus specific low back

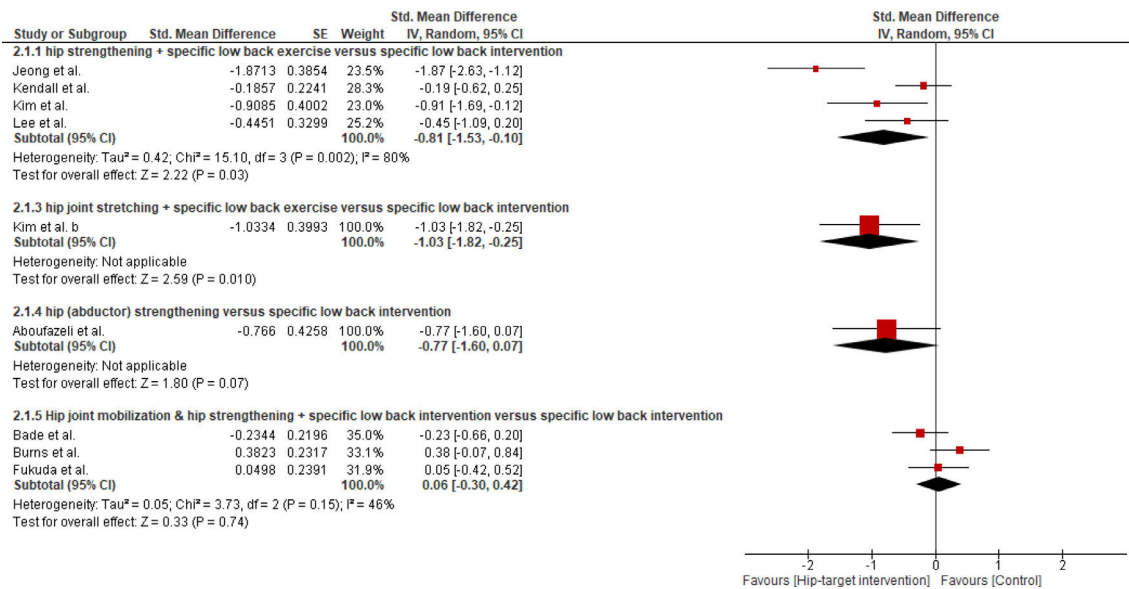
Very low certainty evidence showed that hip strengthening plus specific low back exercise provide a large improvement in disability compared to specific low back intervention ( $SMD = -0.81$ ; 95% CI  $-1.53, -0.10$ ;  $I^2 = 80\%$ ; 4 studies, 220 participants) (Fig. 3D).

## Hip joint stretching + specific low back exercise versus specific low back

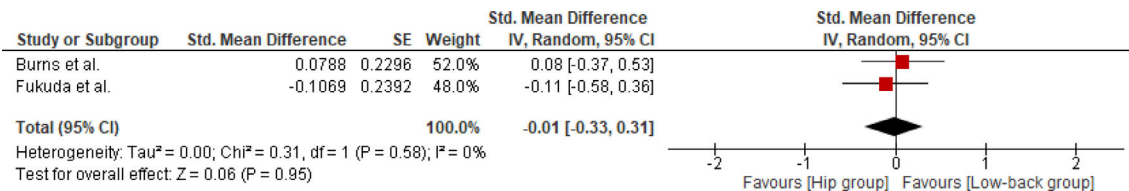
Very low certainty evidence showed that hip joint stretching plus specific low back exercise provide a large improvement in disability compared to specific low back intervention ( $SMD = -1.03$ ; 95% CI  $-1.82, -0.25$ ; 1 study, 32 participants) (Fig. 3D).

## Hip abductor strengthening versus specific low back intervention

Very low certainty evidence showed that hip abductor strengthening provide no improvement in disability



**Fig. 3D** Forest plot of disability for hip-targeted interventions in isolation or in combination with LBP interventions versus specific low back treatment in the short-term.



**Fig. 3E** Forest plot of disability for hip-targeted interventions combined with LBP interventions versus specific low back treatment in the medium-term.

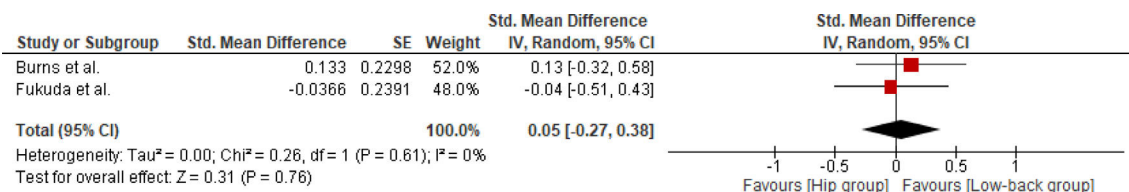
compared to specific low back intervention (SMD =  $-0.77$ ; 95% CI  $-1.60, 0.07$ ; 1 study, 24 participants) (Fig. 3D).

### Hip joint mobilization and hip strengthening + specific low back intervention versus specific low back intervention

Very low certainty evidence showed that hip joint mobilization and hip strengthening plus specific low back intervention provide no improvement in disability compared to specific low back intervention (SMD =  $0.06$ ; 95% CI  $-0.30, 0.42$ ;  $I^2 = 46\%$ ; 3 studies, 230 participants) (Fig. 3D).

These studies measured disability in the medium-term and long-term.<sup>39,43</sup> Very low certainty evidence showed that hip joint mobilization and hip strengthening plus specific low back intervention provide no improvement in disability compared to specific low back intervention in the medium term (SMD =  $-0.01$ ; 95% CI:  $-0.33, 0.31$ ;  $I^2 = 0\%$ ; 2 studies; 146 participants) (Fig. 3E), or long-term (SMD =  $0.05$ ; 95% CI:  $-0.27, 0.38$ ;  $I^2 = 0\%$ ; 2 studies; 146 participants) (Fig. 3F).

According to GRADE, the overall certainty of evidence for all comparisons were rated as very low for pain intensity and disability (Table 2).



**Fig. 3F** Forest plot of disability for hip-targeted interventions combined with LBP interventions versus specific low back treatment in the long-term.



**Table 2** Summary of evidence of the results according to their certainty and their importance using the GRADE tool.

№ of studies	Study design	Risk of bias	Certainty assessment				№ of patients		Effect Absolute (95% CI)	Certainty
			Inconsistency	Indirectness	Imprecision	Others	[hip-targeted group]	[Control group]		
3	RCTs	Very serious <sup>a</sup>	Serious <sup>c</sup>	Not serious	Serious <sup>d</sup>	None	93	87	MD 0.66 less (0.86 less to 0.46 less)	⊕xxx Very Low
1	RCTs	Very serious <sup>a</sup>	—	—	Very serious <sup>d</sup>	None	24	10	MD 0.55 less (1.02 less to 0.08 higher)	⊕xxx Very Low
1	RCTs	Very serious <sup>a</sup>	—	—	Very serious <sup>d</sup>	None	12	12	MD 0.93 less (1.67 less to 0.19 higher)	⊕xxx Very Low
3	RCTs	Very serious <sup>a</sup>	Serious <sup>b</sup>	Not serious	Not serious <sup>d</sup>	None	117	113	MD 0.15 less (0.59 less to 0.3 higher)	⊕xxx Very Low
2	RCTs	Serious <sup>a</sup>	Serious <sup>b</sup>	Not serious	Serious <sup>d</sup>	None	72	74	MD 0.32 less (0.96 less to 0.31 higher)	⊕xxx Very Low
2	RCTs	Serious <sup>a</sup>	Serious <sup>b</sup>	Not serious	Serious <sup>d</sup>	None	72	74	MD 0.10 less (0.65 less to 0.45 higher)	⊕xxx Very Low
4	RCTs	Very serious <sup>a</sup>	Serious <sup>c</sup>	Not serious	Not Serious	None	113	107	SMD 0.81 less (1.53 less to 0.10 less)	⊕xxx Very Low
1	RCTs	Very serious <sup>a</sup>	—	—	Very serious <sup>d</sup>	None	24	10	SMD 1.03 less (1.82 less to 0.25 less)	⊕xxx Very Low
1	RCTs	Very serious <sup>a</sup>	—	—	Very serious <sup>d</sup>	None	12	12	SMD 0.77 less (1.6 less to 0.07 less)	⊕xxx Very Low
3	RCTs	Very serious <sup>a</sup>	Serious <sup>b</sup>	Not serious	Not serious <sup>d</sup>	None	117	113	SMD 0.06 less (0.30 less a 0.42 higher)	⊕xxx Very Low
2	RCTs	Serious <sup>a</sup>	Serious <sup>b</sup>	Not serious	Serious <sup>d</sup>	None	72	74	SMD 0.01 less (0.33 less a 0.31 higher)	⊕xxx Very Low
2	RCTs	Serious <sup>a</sup>	Serious <sup>b</sup>	Not serious	Serious <sup>d</sup>	None	72	74	SMD 0.05 higher. (0.38 higher to 0.27 less)	⊕xxx Very Low

CI, confidence interval; MD, mean difference; RCTs, randomized controlled trial; SMD, standardized mean difference.

Explanations:

a. More than 25% of the participants were from studies with poor or fair methodological quality, considering these aspects: Lack of allocation concealment, random allocation and/or sample size calculation, participant and personnel blinding, blinding of outcome assessors.

b. Significant heterogeneity regarding outcome measurement or intervention, or if the  $I^2$  value was  $\geq 50\%$ .

c. Significant heterogeneity regarding outcome measurement or intervention, or if the  $I^2$  value was  $\geq 75\%$ .

d. Fewer than 100 participants were included in the comparison or single randomized controlled trials included.

High: We are very confident that the true effect is close to the estimate of the effect.

Moderate: We are moderately confidence in the effect estimate. The true effect is close to the estimate of the effect, but the result can be different.

Low: Confidence in the effect estimate is limited, the true effect can be substantially different from the estimate of the effect.

Very Low: There is little confidence in the effect estimate, the true effect is likely to be substantially different from the estimate effect.

## Discussion

The present systematic review and meta-analysis found very low certainty evidence suggesting that hip strengthening in isolation or combined with specific low back exercise and hip stretching combined with specific low back exercise are more effective for reducing pain intensity and disability than specific low back interventions in isolation in patients with LBP in the short-term. The risk of bias, inconsistency, and imprecision of the results downgraded the level of evidence to very low (GRADE).

Concerning the methodological quality of the included RCTs, common methodological flaws were lack of concealed allocation, blinding of participants, therapists, and assessors, and sample size calculation. But it is important to consider that therapist blinding is not possible in conservative non-pharmacological interventions.

This meta-analysis included 8 RCTs and indicated that the application of hip strengthening in isolation or combined with specific low back exercise and hip stretching combined with specific low back exercise in patients with LBP showed an immediate decrease in pain intensity and disability. The changes achieved were statistically significant but clinically unimportant for pain intensity (MD= -0.55; -0.93), and the effect estimated for disability was moderate to large (SMD= -0.77; -1.03). Our results were similar to those obtained by De Jesus et al., but the MDs and SMDs achieved in this study were higher for pain intensity and disability.<sup>21</sup> These differences could be because, in the study of De Jesus et al., only 4 and 5 studies measured pain intensity and disability, respectively.<sup>21</sup> In addition, the interventions were based on hip flexor, extensor, abductor, and adductor muscles strengthening in all the studies included, so the experimental groups were more homogeneous, but the comparison did not only include specific low-back interventions. In contrast, Bernet et al.,<sup>20</sup> concluded that adding hip-targeted interventions in patients with LBP produced no benefits.<sup>20</sup> However, this meta-analysis included only 5 studies in which the interventions were based on hip strengthening, manual therapy, strengthening plus manual therapy, and aquatic therapy.<sup>20</sup> Therefore, each included study performed a different intervention showing a high heterogeneity, which could affect the results.

This is the first systematic review and meta-analysis investigating the medium- and long-term effects of hip interventions in patients with LBP. Only 2 studies assessed the medium- and long-term effects, and the changes were not statistically significant. The results showed that the treatment of the hip seems to produce no benefits in the medium- or long-term follow-up. These results must be interpreted with caution due to the small number of studies that assessed the follow-up. Also, the guidelines followed by these patients during the follow-up period was not described, nor the forms of control by the study authors.

The short-, medium-, and long-term results found in this systematic review and meta-analysis may be related to several factors, such as the eligibility criteria, the type of intervention, and the intervention duration.

The eligibility criteria for all the included studies<sup>36–43</sup> and for recent meta-analysis<sup>20,21</sup> was the application of a hip-targeted intervention in patients with LBP. But only 2 studies described the presence of a hip impairment, such as

hip range of motion limitation or hip muscle strength weakness<sup>39,43</sup> as inclusion criteria. The application of a specific intervention in the hip joint or related tissues when there is no hip impairment could be related to the lack of improvements in pain intensity or disability.<sup>36,37,41</sup>

Seven of the included studies applied lumbar stabilization exercises or guideline-oriented low back treatment in the hip-targeted group.<sup>36–39,41–43</sup> These therapies have shown to be effective in reducing pain and disability in patients with LBP.<sup>44</sup> However, the interventions applied to the hip region varied widely. Five studies applied hip strengthening,<sup>36–38,40,42</sup> 3 studies combined hip strengthening with manual therapy,<sup>39,41,43</sup> and one study applied hip stretching.<sup>38</sup> The heterogeneity of the interventions used in the hip-targeted group of each study and the application of a specific treatment in the hip region in patients with LBP but without any coexisting hip impairment may explain the lower values found in the short-term and the lack of benefits in the medium- and long-terms. Future studies should consider the assessment of the hip region in patients with LBP and verify the most appropriate type of therapy for each situation.

Concerning the duration, the frequency, and the total number of sessions, most of the included studies applied 10 to 24 sessions in a period of 4 to 8 weeks.<sup>37–40,42</sup> However, 3 studies did not present all the necessary information to replicate the study.<sup>36,41,43</sup> These studies did not describe the duration of the intervention and the total number of sessions, and 2 presented no statistically significant differences between groups.<sup>36,43</sup> The results achieved in this study in the short-, medium- and long-term may also be related to the frequency or the duration of the intervention.

From a clinical point of view, this study found very low certainty evidence suggesting that hip strengthening in isolation or combined with specific low back exercise and hip stretching combined with specific low back exercise is effective for reducing pain intensity and disability in patients with LBP in the short-term. In addition, very low certainty evidence suggested that hip joint mobilization and hip strengthening combined with specific low back intervention versus specific low back intervention produce no improvements in the short-, medium-, and long-terms. These results should be considered according to its strengths and limitations. The main strengths are the comprehensive literature search, methodological consistency, data extraction, rigorous statistical analysis, and the inclusion of RCTs. Some important limitations were the different types of treatments applied, the inadequate description of the therapies, the heterogeneous durations of the interventions, and the lack of hip impairments as an eligibility criterion. Additionally, the small number of studies included in the medium- and long-term follow-up analysis should be considered.

This systematic review and meta-analysis has some limitations. Our search strategy may have been limited by the omission of other databases, such as SportDiscus, and we may have missed relevant articles. The heterogeneity found in the treatments applied in the studies, such as the type and duration of the therapies, complicates the interpretation of our results. Methodological limitations include the insufficient sample size that could overestimate the results and the lack of follow-up measurements of the studies. Future studies should consider hip impairment as an

eligibility criterion, such as hip range of motion limitation or hip muscle weakness, to analyze the effects of hip-targeted intervention in patients with LBP. Thus, the management of a patient with LBP should include a hip-targeted intervention only when a hip impairment is detected during the assessment. The quality of the studies should be improved. Future studies should consider the allocation concealment and blinding of participants and researchers to reduce the risk of bias. The total number of sessions and the duration of the intervention should be described to allow the replication and comparison of the study. Finally, the combination of therapies that produces the best effects should be investigated, as well as their dose.

## Conclusion

This systematic review and meta-analysis found very low certainty evidence suggesting a positive effect of hip strengthening in isolation or combined with specific low back exercise and hip stretching combined with specific low back exercise for decreasing pain intensity and disability compared to specific low back interventions in isolation, in the short-term, in patients with LBP. Further investigation is needed to determine the medium- and long-term effects of hip-targeted interventions in patients with LBP and to determine the best multimodal intervention.

## Conflicts of interest

The authors declare no conflict of interest.

## Supplementary materials

Supplementary material associated with this article can be found in the online version at doi:[10.1016/j.bjpt.2023.100502](https://doi.org/10.1016/j.bjpt.2023.100502).

## References

- Freburger JK, Holmes GM, Agans RP, et al. The rising prevalence of chronic low back pain. *Arch Intern Med*. 2009;169(3):251–258. <https://doi.org/10.1001/archinternmed.2008.543>.
- Koes BW, van Tulder MW, Thomas S. Diagnosis and treatment of low back pain. *BMJ*. 2006;332(7555):1430–1434. <https://doi.org/10.1097/00005131-199209000-00031>.
- O'Sullivan PB. Lumbar segmental “instability”: clinical presentation and specific stabilizing exercise management. *Man Ther*. 2000;5(1):2–12. <https://doi.org/10.1054/math.1999.0213>.
- Walker BF, Muller R, Grant WD. Low back pain in Australian adults. Prevalence and associated disability. *J Manipulative Physiol Ther*. 2004;27(4):238–244. <https://doi.org/10.1016/j.jmpt.2004.02.002>.
- Hoy D, Bain C, Williams G, et al. A systematic review of the global prevalence of low back pain. *Arthritis Rheum*. 2012;64(6):2028–2037. <https://doi.org/10.1002/art.34347>.
- Hicks GE, Fritz JM, Delitto A, McGill SM. Preliminary development of a clinical prediction rule for determining which patients with low back pain will respond to a stabilization exercise program. *Arch Phys Med Rehabil*. 2005;86(9):1753–1762. <https://doi.org/10.1016/j.apmr.2005.03.033>.
- Van Dillen LR, Gombatto SP, Collins DR, Engsborg JR, Sahrman SA. Symmetry of timing of hip and lumbopelvic rotation motion in 2 different subgroups of people with low back pain. *Arch Phys Med Rehabil*. 2007;88(3):351–360. <https://doi.org/10.1016/j.apmr.2006.12.021>.
- Mine K, Ishiguro K, Nakayama T. Immediate effects of stretching for iliopsoas muscles on lumbopelvic-hip kinematics during gait: a randomised controlled trial using subjects with non-specific low back pain. *Int J Sport Exerc Med*. 2017;3(3):1–6. <https://doi.org/10.23937/2469-5718/1510062>.
- Thambyah A, Hee HT, Das De S, Lee SM. Gait adaptations in patients with longstanding hip fusion. *J Orthop Surg*. 2003;11(2):154–158. <https://doi.org/10.1177/230949900301100209>.
- Jo HJ, Song AY, Lee KJ, Lee DC, Kim YH, Sung PS. A kinematic analysis of relative stability of the lower extremities between subjects with and without chronic low back pain. *Eur Spine J*. 2011;20(8):1297–1303. <https://doi.org/10.1007/s00586-010-1686-1>.
- Hicks GE, Sions MJ, Velasco TO. Hip symptoms, physical performance and health status in older adults with chronic low back pain: a preliminary investigation. *Arch Phys Med Rehabil*. 2018;99(7):1273–1278. <https://doi.org/10.1016/j.apmr.2017.10.006.Hip>.
- Roach SM, San Juan JG, Suprak DN, Lyda M, Bies AJ, Boydston CR. Passive hip range of motion is reduced in active subjects with chronic low back pain compared to controls. *Int J Sports Phys Ther*. 2015;10(1):13–20.
- Murray E, Birley E, Twycross-Lewis R, Morrissey D. The relationship between hip rotation range of movement and low back pain prevalence in amateur golfers: an observational study. *Phys Ther Sport*. 2009;10(4):131–135. <https://doi.org/10.1016/j.ptsp.2009.08.002>.
- Winters MV, Blake CG, Trost JS, et al. Passive versus active stretching of hip flexor muscles in subjects with limited hip extension: a randomized clinical trial. *Phys Ther*. 2004;84(9):800–807. <https://doi.org/10.1093/ptj/84.9.800>.
- Vad VB, Bhat AL, Basrai D, Aspergren DD, Andrews JR. Low back pain in professional golfers: the role of associated hip and low back range-of-motion deficits. *Am J Sports Med*. 2004;32(2):494–497. <https://doi.org/10.1177/0363546503261729>.
- Vad VB, Gebel A, Dines D, Altchek D, Norris B. Hip and shoulder internal rotation range of motion deficits in professional tennis players. *J Sci Med Sport*. 2003;6(1):71–75. [https://doi.org/10.1016/S1440-2440\(03\)80010-5](https://doi.org/10.1016/S1440-2440(03)80010-5).
- Van Dillen LR, Bloom NJ, Gombatto SP, Susco TM. Hip rotation range of motion in people with and without low back pain who participate in rotation-related sports. *Phys Ther Sport*. 2008;9(2):72–81. <https://doi.org/10.1016/j.ptsp.2008.01.002.Hip>.
- Nadler SF, Malanga GA, DePrince M, Stitik TP, Feinberg JH. The relationship between lower extremity injury, low back pain, and hip muscle strength in male and female collegiate athletes. *Clin J Sport Med*. 2000;10(2):89–97.
- Delitto A, George SG, Van Dillen L, et al. Low back pain: clinical practice guidelines linked to the international classification of functioning, disability, and health from the orthopaedic section of the American Physical Therapy Association. *J Orthop Sport Phys Ther*. 2012;42(4):A1–57. <https://doi.org/10.2519/jospt.2012.42.4.A1.Low>.
- Bernet BA, Peskura ET, Meyer ST, Bauch PC, Donaldson MB. The effects of hip-targeted physical therapy interventions on low back pain: a systematic review and meta-analysis. *Musculoskelet Sci Pract*. 2019;39(January 2018):91–100. <https://doi.org/10.1016/j.msksp.2018.11.016>.
- de Jesus FLA, Fukuda TY, Souza C, et al. Addition of specific hip strengthening exercises to conventional rehabilitation therapy for low back pain: a systematic review and meta-analysis. *Clin Rehabil*. 2020;34(11):1368–1377. <https://doi.org/10.1177/0269215520941914>.

22. Page MJ, McKenzie JE, Bossuyt PM, et al. The PRISMA 2020 statement: an updated guideline for reporting systematic reviews. *BMJ*. 2021;372. <https://doi.org/10.1136/BMJ.N71>.
23. Sun S. Meta-analysis of Cohen's kappa. *Heal Serv Outcomes Res Methodol*. 2011;11(3–4):145–163. <https://doi.org/10.1007/s10742-011-0077-3>.
24. Higgins J, Altman DG, Gøtzsche PC, et al. The Cochrane Collaboration's tool for assessing risk of bias in randomised trials. *BMJ*. 2011;343:d5928. <https://doi.org/10.1136/bmj.d5928>.
25. Guyatt GH, Oxman AD, Kunz R, et al. GRADE guidelines: 7. Rating the quality of evidence - inconsistency. *J Clin Epidemiol*. 2011;64(12):1294–1302. <https://doi.org/10.1016/j.jclinepi.2011.03.017>.
26. Dantas LO, Osani MC, Bannuru RR. Therapeutic ultrasound for knee osteoarthritis: a systematic review and meta-analysis with grade quality assessment. *Brazilian J Phys Ther*. 2021;25(6):688–697. <https://doi.org/10.1016/j.bjpt.2021.07.003>.
27. Dal Farra F, Risio RG, Vismara L, Bergna A. Effectiveness of osteopathic interventions in chronic non-specific low back pain: a systematic review and meta-analysis. *Complement Ther Med*. 2021;56: 102616. <https://doi.org/10.1016/j.ctim.2020.102616>.
28. Guyatt GH, Oxman AD, Kunz R, et al. GRADE guidelines 6. Rating the quality of evidence - imprecision. *J Clin Epidemiol*. 2011;64(12):1283–1293. <https://doi.org/10.1016/j.jclinepi.2011.01.012>.
29. Xie CX, Machado GC. Clinimetrics: grading of recommendations, assessment, development and evaluation (GRADE). *J Physiother*. 2021;67(1):66. <https://doi.org/10.1016/j.jphys.2020.07.003>.
30. Wieland LS, Skoetz N, Pilkington K, Harbin S, Vempati R, Berman BM. Yoga for chronic non-specific low back pain. *Cochrane Database Syst Rev*. 2022;11(11): CD010671. <https://doi.org/10.1002/14651858.CD010671.pub3>.
31. Ostelo RWJG, Deyo RA, Stratford P, et al. Interpreting change scores for pain and functional status in low back pain: towards international consensus regarding minimal important change. *Spine*. 2008;33(1):90–94. <https://doi.org/10.1097/BRS.0b013e31815e3a10>.
32. Cohen J. *Statistical Power Analysis for the Behavioral Sciences*. (Hillsdale N, ed.). Lawrence Erlbaum Associates Publishers; 1988.
33. Higgins J, Deeks J, Altman D. Chapter 16. Special topics in statistics. *Cochrane Handbook for Systematic Reviews of Interventions Version 5.1.0.2011*.
34. Higgins JPT, Thomas J, Chandler J, et al. Cochrane handbook for systematic reviews of interventions. *Cochrane Handb Syst Rev Interv*. 2019;1–694. <https://doi.org/10.1002/9781119536604>.
35. Ju T, Choi W, Yang Y, Lee S. Effects of hip mobilization on pain and function for chronic low back pain individuals with limited range of hip joint motion. *Indian J Sci Technol*. 2015;8(26):1–6. <https://doi.org/10.17485/ijst/2015/v8i26/80867>.
36. Kendall KD, Emery CA, Wiley JP, Ferber R. The effect of the addition of hip strengthening exercises to a lumbopelvic exercise programme for the treatment of non-specific low back pain: a randomized controlled trial. *J Sci Med Sport*. 2015;18(6):626–631. <https://doi.org/10.1016/j.jsams.2014.11.006>.
37. Lee SW, Kim SY. Effects of hip exercises for chronic low-back pain patients with lumbar instability. *J Phys Ther Sci*. 2015;27(2):345–348. <https://doi.org/10.1589/jpts.27.345>.
38. Kim B, Yim J. Core stability and hip exercises improve physical function and activity in patients with non-specific low back pain: a randomized controlled trial. *Tohoku J Exp Med*. 2020;251(3):193–206. <https://doi.org/10.1620/tjem.251.193>.
39. Fukuda TY, Aquino LM, Pereira P, et al. Does adding hip strengthening exercises to manual therapy and segmental stabilization improve outcomes in patients with nonspecific low back pain? A randomized controlled trial. *Brazilian J Phys Ther*. 2021;25(6):900–907. <https://doi.org/10.1016/j.bjpt.2021.10.005>.
40. Aboufazel M, Afshar-Mohajer N, Jafarpisheh MS, Heidari M, Akbari M. Recovery of the lumbar multifidus muscle size in chronic low back pain patients by strengthening hip abductors: a randomized clinical trial. *J Bodyw Mov Ther*. 2021;26:147–152. <https://doi.org/10.1016/j.jbmt.2020.12.035>.
41. Bade M, Cobo-Estevéz M, Neeley D, Pandya J, Gunderson T, Cook C. Effects of manual therapy and exercise targeting the hips in patients with low-back pain—a randomized controlled trial. *J Eval Clin Pract*. 2017;23(4):734–740. <https://doi.org/10.1111/jep.12705>.
42. Jeong UC, Sim JH, Kim CY, Hwang-Bo G, Nam CW. The effects of gluteus muscle strengthening exercise and lumbar stabilization exercise on lumbar muscle strength and balance in chronic low back pain patients. *J Phys Ther Sci*. 2015;27(12):3813–3816. <https://doi.org/10.1589/jpts.27.3813>.
43. Burns SA, Cleland JA, Rivett DA, et al. When treating coexisting low back pain and hip impairments, focus on the back: adding specific hip treatment does not yield additional benefits—a randomized controlled trial. *J Orthop Sport Phys Ther*. 2021;51(12):581–601. <https://doi.org/10.2519/jospt.2021.10593>.
44. Shiri R, Coggon D, Falah-Hassani K. Exercise for the prevention of low back pain: systematic review and meta-analysis of controlled trials. *Am J Epidemiol*. 2018;187(5):1093–1101. <https://doi.org/10.1093/aje/kwx337>.